

RPA and System Office Update

Angie Bell
Research and Policy Analysis

Spring 2024 RAC-IRP



Wednesday



Financial Transparency and Gainful Employment Regulations



What is it?

- Regulations published October 10, 2023 that go into effect in 2024 with purpose to:
 - Improve quality and availability of info provided directly to students about costs, sources of fin. Aid, and outcomes of students enrolled in Title IV eligible programs
 - Protect students and taxpayers from career-training programs that fail to provide sufficient financial value.

What is it?

- New reporting requirements to create data for two metrics for completers of each academic program:
 - Debt-to-earnings ratio
 - Earnings premium (beyond HS grad)

Who?

- Almost all Title IV receiving institutions except those with no programs large enough to report on
- Consequences for failing metric thresholds:
 - GE programs-Title IV eligibility
 - Non-GE-required acknowledgments or warnings

When?

- April 2024, more information and guidance
- Goes into effect on July 1, 2024
- First reports due October 1, 2024
- First release of metrics is early 2025
- Federal program info site published July 2026
- Requirements for acknowledgements and warnings in place July 2026

Data Requirements

- Academic program-level info includes:
 - Length
 - Accreditation status
 - Enrollment
 - License exam taking and passing
 - If certain types of programs (e.g., qualifying graduate program)

Data Requirements

- Student-level **enrollment** info for Title IV recipients includes:
 - Attendance dates and status
 - If in CTP or prison prog.
 - FT/PT
 - Total COA
 - Tuition & fees assessed
 - Residency
 - Housing & food allowance
 - Books & supplies allowance
 - Institutional grants
 - State, local grants
 - Known private loans

Data Requirements

- Student-level **completer** info includes:
 - Date completed or withdrew
 - If from CTP or prison program
 - Totals for entire enrollment in program:
 - Private loans
 - Institutional debt
 - T&F assessed
 - Allowance for books & supplies
 - Institutional Aid



Data Requirements: Cohorts

- Institutions will report on either 2- or 4-year groupings or cohorts of completers depending on number of completers
- Can choose standard or transitional reporting, this affects which years to report

Who will be involved?

Assembling this data will require collaboration across campus offices:

- Institutional Research
- Registrars
- Academic Affairs
- Financial Aid
- Fiscal Affairs
- IT



What's next?

- Detailed requirements from feds later this month
- RPA and USO Student Affairs assembling guidance; sharing with affected campus offices
- Assessing what data RPA can provide
- Working to see what other help we can provide to campuses in pulling data USO doesn't have



Inside RPA



RPA Personnel

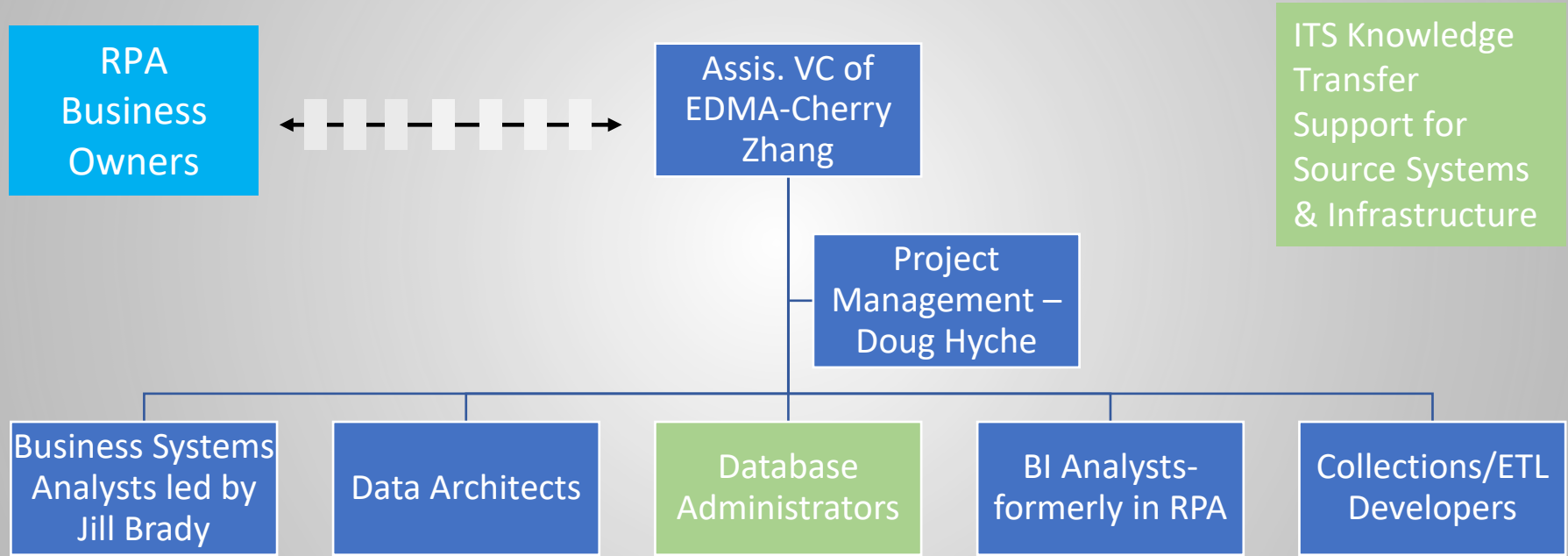
- Hired two Research Associates:
 - Yanling Ma
 - Pearson Brown



Enterprise Data Management and Analytics



Enterprise Data Management and Analytics Unit in ITS



EDMA Current and Upcoming Work

- Dashboarding
 - Refresh executive dashboards ([strategic plan](#) and operational), prioritize issues, and begin remediation
 - Support Enrollment Monitoring collection and dashboards
 - Support later stages of development of Financials, HR, and DMA dashboards
 - Migrate dashboards from other tools to Power BI, integrate Power BI dashboards into USG Power Service
 - Develop processes from intake to creation to support

EDMA Current and Upcoming Work

- Support and update data collections, including new admissions data collection
- Cognos upgrade from 11 to 12 (this weekend)
- Other projects: GA Match, Pathways, OPB and GA AWARDS data submission



USO Dashboarding Initiative

- Increased use to monitor performance both of operations and presidents
- Makes correct and timely data imperative



Data Collections and Governance



Financial Aid Data Collection

- In October 2024 for the 2023-24 aid year (fall 23, spring & summer 24):
 - Adjust maximum award amounts



Academic Data Collection

Facilities Spring 2024-just closed

- Modification and reactivation of VBRM007 (Room Use Code 110 requires square feet per station 1 - 40).

Spring 2024 Mid-Term

- Preliminary headcount-thank you!
- Addition of Global Learning / Diversity HIP course attribute



Academic Data Collection

Summer 2024 Mid-Term

- Adding validation to prevent graduate students from receiving Border State Waivers
- Remediation for error VSTE01 1 [If Admit Type is Traditional Freshman (but HS Code does not equal "NNNNNN" and HS Diploma Type does not equal "HS" or "GD"), the HS GPA cannot be null] to properly account for null HS diploma type.



Academic Data Collection

Summer 2024 Mid-Term

- Changing validation VSPE016 (If M is submitted for Degree Level Code, then the Student Level must be 72) to fire only for majors, not concentrations.
- Fix ETL issue with Course Section Technology that can cause failure
- Add STU_INST_UID to display in Cognos for VSTE221 (State of Origin must be valid code except for citizenship status codes of A) to ease identifying students



Academic Data Collection

Summer 2024 Mid-Term

- Ad hoc collection of introductory math and English transfer courses for undergraduates

Further out

- Collection of common nursing interest concentration code ZNUI
- Adding SAT score validations related to section and total scores (if have one, must have all)



DMA Project

- Enhancement of campus <--> USO AA <--> RPA processes
- Enhancements to APEX underlying database
- Requesting corrections to DMA from campuses and addition of new fields for all programs
- Enhancing DMA public facing tool
- Creating public academic program search tool for Georgia Degrees Pay

Georgia Degrees Pay Program Search Tool

Select Preferred Delivery Mode

Institution

All ▾

Degree Level

Bachelor's ▾

Academic Area

Health Professions And Rel... ▾

Find a Program Near You!

Enter Your Zip Code

30606 🔍 ✕

Find a Program within:

All Distances

5 miles

25 miles

50 miles

100 miles

View Links for Program and Institution Details in Table View!





Table View

Card View

🔍 ✕

Search

33 Results Notice: There are programs that are located on multiple institution campuses.

Program Name	Institution	Delivery Mode	Campus Location	Mile Zip
Bachelor of Science in Healthcare Services and Informatics Administration	 UNIVERSITY of NORTH GEORGIA	On Campus And Online	Dahlonega, GA	▲
Bachelor of Science in Dental Hygiene	 Georgia State University	Online	Atlanta, GA	
Bachelor of Science in Nursing	 Georgia State University	On Campus And Online	Atlanta, GA	
Bachelor of Science in Nursing, RN to BSN	 Georgia State University	On Campus And Online	Atlanta, GA	
Bachelor of Science in Dental Hygiene		On Campus	Morrow, GA	



Web DMA tool for USO and Campuses



Degrees & Majors Authorized

Institution Name: All **CIP Code**: All
Degree Level: All **Delivery Mode**: All **Program Status**: Multiple selections
Program Name: All **Keyword Search**: Search

View Additional Filters

Reset All Filters

Choose Columns to Display Below
 All

3,185 Results

Institution Name	Degree/Major Description	Degree Level	Delivery Mode	Degree Acronym	CIP Code	Hours	Effective Da
Abraham Baldwin Agricultural College	Associate in Agricultural and Industrial Equipment Technology	Associate	On Campus	AAIET	01020400		12/25/1899
Abraham Baldwin Agricultural College	Associate in Agriculture in Agricultural Business	Associate	On Campus	AAG	01010200		12/25/1899
Abraham Baldwin Agricultural College	Associate in Agriculture in Agricultural Science	Associate	On Campus	AAG	01000000		1/24/2010
Abraham Baldwin Agricultural College	Associate in Agriculture in Crops	Associate	On Campus	AAG	01030400		5/12/1986
Abraham Baldwin Agricultural College	Associate in Agriculture in Livestock	Associate	On Campus	AAG	01030200		5/12/1986
Abraham Baldwin Agricultural College	Associate in Computer Program/Information Systems Technology	Associate	On Campus	ACST	52120100		5/23/1986
Abraham Baldwin Agricultural College	Associate in Criminal Justice	Associate	On Campus	ACJ	43010700		12/25/1899
Abraham Baldwin Agricultural College	Associate in Forest Technology	Associate	On Campus	AFT	03051100		1/24/2010
Abraham Baldwin Agricultural College	Associate in General Business	Associate	On Campus	AGB	52010100		12/25/1899
Abraham Baldwin Agricultural College	Associate in Home Economics	Associate	On Campus	AHE	19010100		1/24/2010
Abraham Baldwin Agricultural College	Associate in Marketing and Distributive Education	Associate	On Campus	AMDE	52190800		1/24/2010
Abraham Baldwin Agricultural College	Associate in Office Management/Information Process	Associate	On Campus	AOMIP	52040100		12/25/1899
Abraham Baldwin Agricultural College	Associate in Ornamental Horticulture	Associate	On Campus	AOH	01060100		12/25/1899





HR DED Project

Purpose

- **Technical Information:** With the move of all institutions to OneUSG, the entire HR DED needed to be updated for technical details
- **Data Governance:** was the data collected as intended according to policy? Any changes needed?
- **User Experience:** how could the HR DED be more useful to a wider group of users?

Deliverables: updated DED, updated business process document

Project Team: Led by Leslie Hodges in RPA, collaboration with ITS, SSC, USO HR and campus representatives

Benefit Plan Code		HEB001										
Category	Human Resource / Benefits / Employee Benefits / HEB001											
Description	The Benefit Plan Code indicates the specific benefit plan (e.g., Consumer Choice HSA) within the plan type (e.g., Medical) into which an employee is currently or was previously enrolled. An employee can be enrolled in multiple benefit plans. See HEB005 for information on plan types.											
Data Type	Character	←										
Length	6											
Format		←										
Collection Period	Weekly											
Business Practices	Benefit Plan Codes are loaded from the third-party benefits vendor after employee elections.											
Validation Rules	Status: Active <table border="1"> <thead> <tr> <th>Severity</th> <th>Code</th> <th>Description</th> </tr> </thead> <tbody> <tr> <td>Error</td> <td>VHEB001</td> <td>Benefit Plan Code cannot be blank.</td> </tr> </tbody> </table>		Severity	Code	Description	Error	VHEB001	Benefit Plan Code cannot be blank.				
Severity	Code	Description										
Error	VHEB001	Benefit Plan Code cannot be blank.										
Valid Values	For current PS valid values and PS to HRDM translations see: PeopleSoft to HRDM Valid Values Mapping ← <table border="1"> <thead> <tr> <th>Code</th> <th>Description</th> </tr> </thead> <tbody> <tr> <td>See PeopleSoft to HRDM Valid Value Mapping report for all codes</td> <td>See PeopleSoft to HRDM Valid Value Mapping report for all descriptions</td> </tr> </tbody> </table>		Code	Description	See PeopleSoft to HRDM Valid Value Mapping report for all codes	See PeopleSoft to HRDM Valid Value Mapping report for all descriptions						
Code	Description											
See PeopleSoft to HRDM Valid Value Mapping report for all codes	See PeopleSoft to HRDM Valid Value Mapping report for all descriptions											
Data Source	<table border="1"> <tbody> <tr> <td>Provider</td> <td>PeopleSoft</td> </tr> <tr> <td>Table</td> <td>PS_BN_SNAP_PLAN, PS_SAVINGS_PLAN ←</td> </tr> <tr> <td>Column</td> <td>BENEFIT_PLAN</td> </tr> <tr> <td>Page</td> <td>N/A ←</td> </tr> <tr> <td>Navigation</td> <td>N/A</td> </tr> </tbody> </table>		Provider	PeopleSoft	Table	PS_BN_SNAP_PLAN, PS_SAVINGS_PLAN ←	Column	BENEFIT_PLAN	Page	N/A ←	Navigation	N/A
Provider	PeopleSoft											
Table	PS_BN_SNAP_PLAN, PS_SAVINGS_PLAN ←											
Column	BENEFIT_PLAN											
Page	N/A ←											
Navigation	N/A											
Effective Terms	<table border="1"> <tbody> <tr> <td>Start:</td> <td>012005</td> </tr> <tr> <td>End:</td> <td>(None)</td> </tr> </tbody> </table>		Start:	012005	End:	(None)						
Start:	012005											
End:	(None)											

Updated definition

Meaningful data type and format

Business practices field includes additional information or relevant resources

Data source is correct

Institutional users can trace the HRDM data to PeopleSoft

New doc 172 pages down from 648!!

- Removed obsolete sections
- Moved long lists of values to valid values report

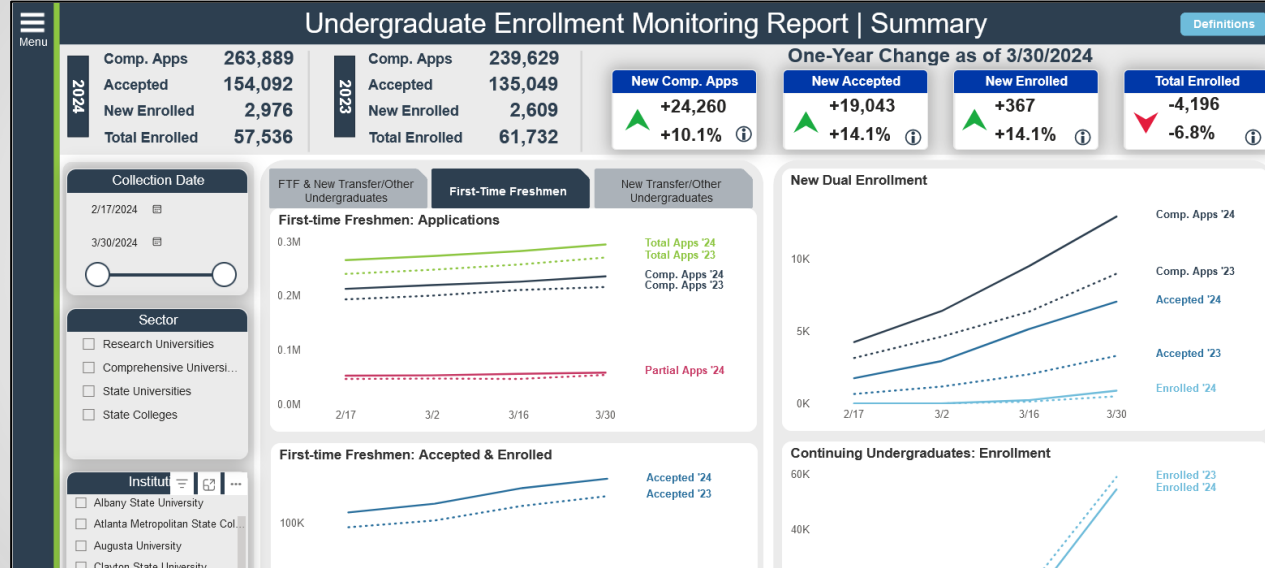


RPA Reporting and Other Projects



Enrollment Monitoring

- New data entry portal
- Prepopulated with last year's data
- Provision of dashboard to campuses
 - Webinar 4/19, 3 pm



Data Provision for USG Initiatives, Policy, & Decision Making

- Applicant data collection and sending to NSC, analysis for destinations for admissions policy
 - new collection upcoming for all institutions
- GA high school grads who enroll out-of-state
- Online course taking outcomes analyses
- In concert with CVIOG
 - Working student analysis
 - Debt to earnings/return on investment



Other Work

- Post-Tenure Review reporting
- Student outcomes related to mental health initiative
- Georgia Match data work
- HOPE and Admissions GPA analysis
- DHS/DCH Pathways enrollment verification



Qlik Data Viz Portal

- Qlik licenses- Pearson.Brown@usg.edu for changes
 - 2 view only licenses for up to 10 users each, 1 developer
- Transitioning apps to PowerBI and aim to have Qlik portal decommissioned by June 2025



Items from Fall IRP Meeting

- Sharing of resources between institutions and with system office:
 - Official USG onboarding of new IR staff
 - Code library, Ben Brandon Chair
 - Virtual trainings by campus IR staff
 - Directory of IR staff, expertise, campus needs
- Dashboarding: discussion groups for those on same tool

Questions and Contact

Angela Bell

Angela.Bell@usg.edu

Work phone: 404-962-3069

Cell: 304-552-6878

